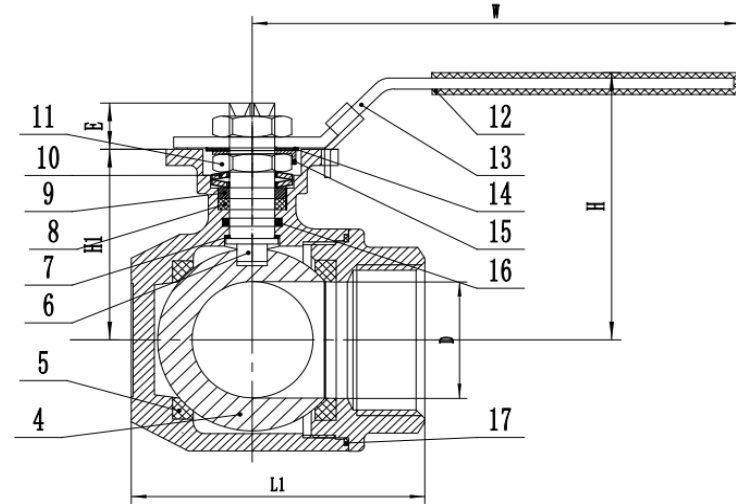


ART NO: 401L /T 3way Stainless steel ball valve

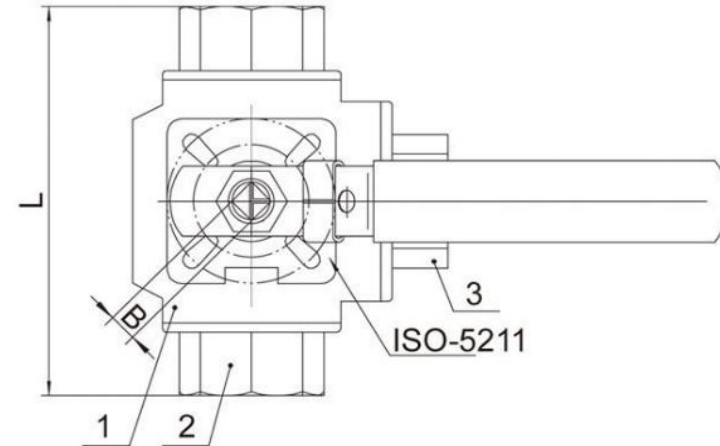
Features

1. 3way Stainless steel L or T port ball valve,
2. Thread FF ends according ISO 228-1G
3. Made of stainless steel CF8M
4. Ball seats PTFE + 15 % G.F.
5. Blow-out proof stem.
6. Stem gasket PTFE.
7. Locking system.
8. Max. Working pressure 63 bar.
9. Working Temperature $-25\text{ }^{\circ}\text{C} + 180\text{ }^{\circ}\text{C}$.
10. Applicable for Water, oil and Gas.



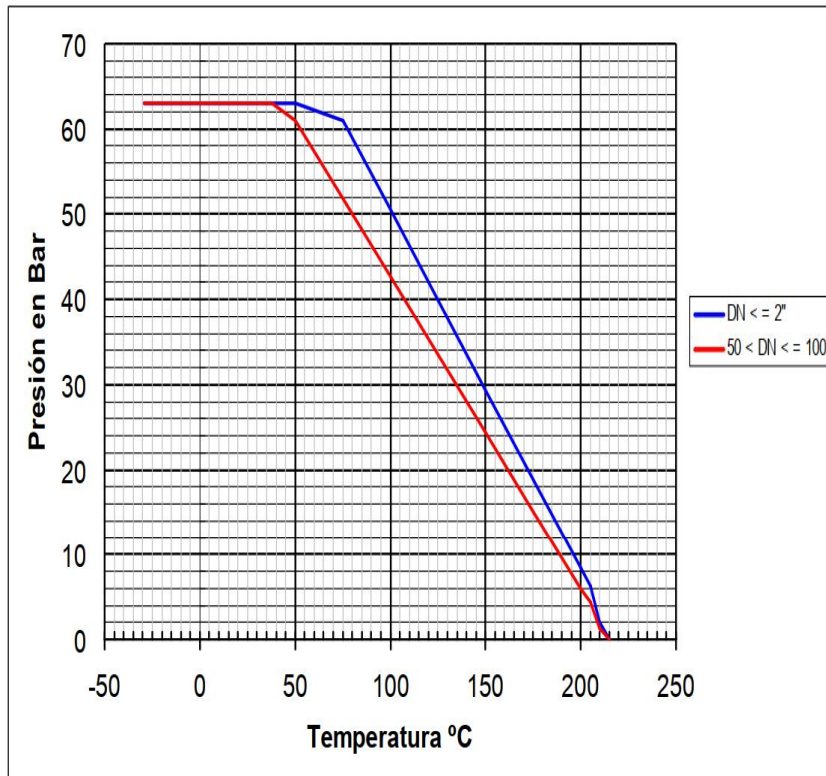
DIMENSIONS

Size	ØD	W±2	L±2	L1 ±2	H±2	B	E±1	ISO5211	H1	Torque N.M
1/4"	9	143	79	64	76	9	9	F04/03	42	8
3/8"	11	143	79	64	76	9	9	F04/03	42	8
1/2"	12.5	143	79	64	76	9	9	F04/03	42	10
3/4"	16	143	83	68	80	9	9	F04/03	49	15
1"	20	163	102	82	95	11	11	F05/04	59.5	20
1"1/4	25	163	120	90	98	11	11	F05/04	63	30
1"1/2	32	188	126	107	110	14	14	F07/05	73.5	45
2"	38	188	150	124	119	14	14	F07/05	82.8	70
2"1/2	48	343	168	135	135	17	15.6	F07/10	103.5	
3"	65	343	198	166	150	17	20	F07/10	118	



PORT	TURN	0°	90°	180°	270°
T-BALL					
L-BALL					

PRESSURE TEMPERATURE RATING



ITEM	DESIGNATION	QTY	MATERIAL
1	BODY	1	CF8/CF8M
2	CAP(1)	2	CF8/CF8M
3	CAP(2)	1	CF8/CF8M
4	BALL	1	CF8/CF8M
5	BALL SEAT	4	RPTFE
6	STEM	1	304/316
7	THUST WASHER	1	PTFE
8	STEM PACKING	1	PTFE
9	GLAND NUT	1	304
10	SPRING WASHER	2	304
11	NUT	2	304
12	HANDLE COVER	1	PVC
13	HANDLE	1	304/316
14	WASHER	1	304
15	THRUST WASHER	1	304
16	O-RING	1	VITON
17	JOINT GASKET	1	PTFE

HEADLOSS CHART

Kv VALUES

Kv = Flow rate of water in cubic meter per hour (m³/h) that will generate a pressure drop of 1 bar across the valve

Medida/ Size	1/4"	3/8"	3/4"	1"	1 1/4"	1 1/2"	2"	2 1/2"	3"
m ³ /h	11	11	15	31	39	62	103	205	320