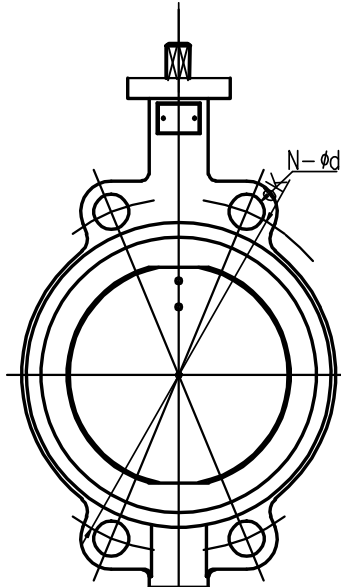
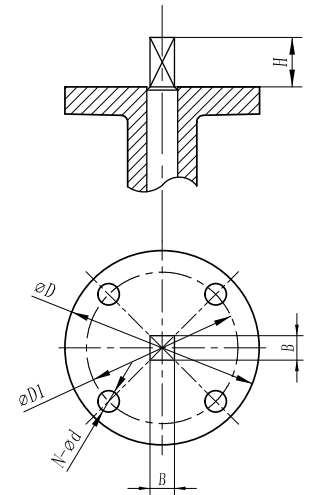
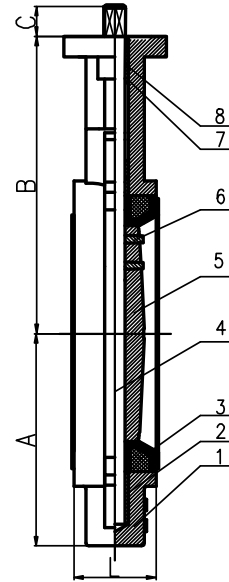


DN 40-DN 150



DN 200-DN 350



DN	ISO5211	øD	øD1	N-ød	B	H
50	F05	65	50	4-8	9	32
65	F05	65	50	4-8	9	32
80	F05	65	50	4-8	9	32
100	F07	90	70	4-10	11	32
125	F07	90	70	4-10	14	32
150	F07	90	70	4-10	14	32

SIZE		A	B	C	L	ANSI 150B		DIN PN 10		DIN PN 16		JIS 10K	
mm	in					øK	N-ød	øK	N-ød	øK	N-ød	øK	N-ød
50	2"	67	141	32	43	120.6	4-ø19	125	4-ø18	125	4-ø18	120	4-ø19
65	2 1/2"	75	151	32	46	139.7	4-ø19	145	4-ø18	145	4-ø18	140	4-ø19
80	3"	95	160	32	46	152.4	4-ø19	160	8-ø18	160	8-ø18	150	8-ø19
100	4"	111	180	32	52	190.5	8-ø19	180	8-ø18	180	8-ø18	175	8-ø19
125	5"	129	193	32	56	215.9	8-ø22.4	210	8-ø18	210	8-ø18	210	8-ø23
150	6"	142	207	32	56	241.3	8-ø22.4	240	8-ø22	240	8-ø22	240	8-ø23

9	handle	GI	1
8	bushing	PTFE	4
7	O-ring	NBR	2
6	pin	316	2
5	disc	316	1
4	stem	410	1
3	seat	EPDM	1
2	bushing	PTFE	1
1	body	316	1
NO	NAME	MATERIAL	QTY
TEST PRESSURE	SHELL		SEAL
	HYDROSTATIC		24bar
	AIR		17.6bar
ATM-DARD	DESIGN CODE	JIS B2064\ DIN3354\ API609	
	INSPECTION&TEST	JIS B2003\ DIN3230\ API598	
	END STANDARD	JIS B2212 \ DIN3230\ ANSI B16.1	
	FACE TO FACE	JIS B2002\ DIN3202\ API609	

Wafer Butterfly Valve

APPROVED	DWG NO.			REV
CHECKED				
DRAWN	SCALE		UNINT	mm
DESIGNED				