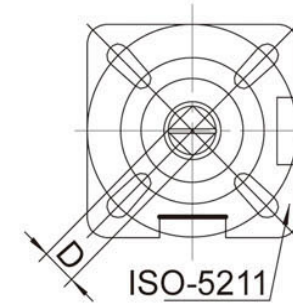




ART NO: 302M 3PC Stainless steel ball valve with ISO5211 mounting pad

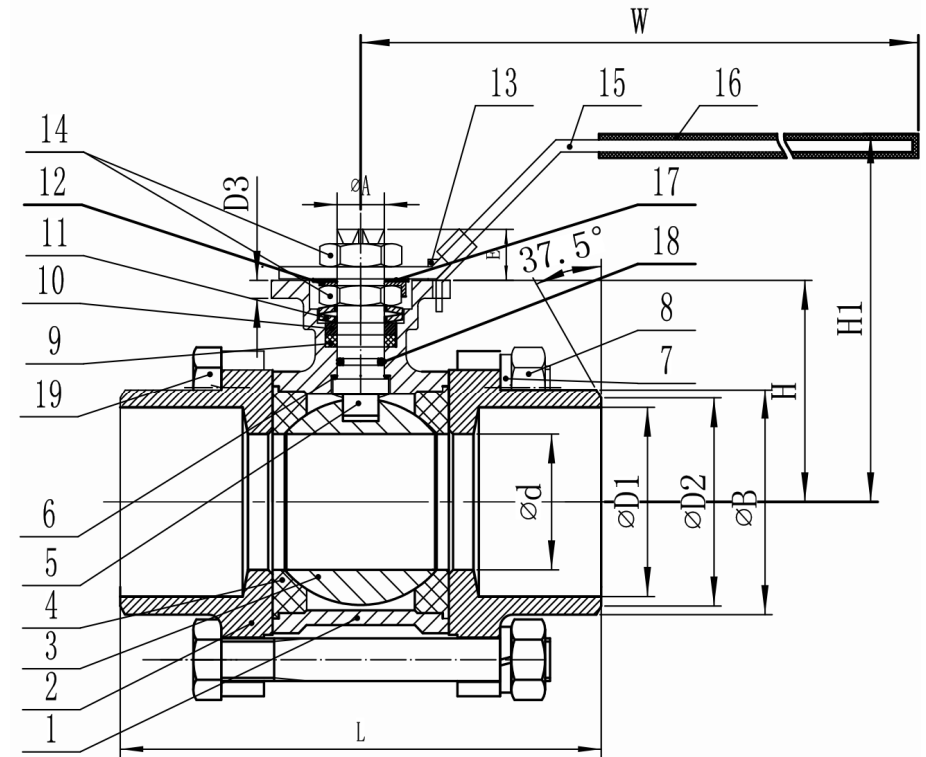
Features

1. Stainless steel full port ball valve, 3 pieces.
2. Thread ends according to ISO 228-1G
3. Made of stainless steel CF8M.
4. Ball seats PTFE 5. O' ring in the stem FKM (Viton).
6. Stem gasket PTFE + 15 % G.F.
7. Locking system.
8. Direct mounting actuator ISO 5211.
9. Blow-out proof stem.
10. Max. working pressure 63 bar.
11. Working Temperature $-25\text{ }^{\circ}\text{C} + 180\text{ }^{\circ}\text{C}$.
12. Applicable for Water, oil and Gas.

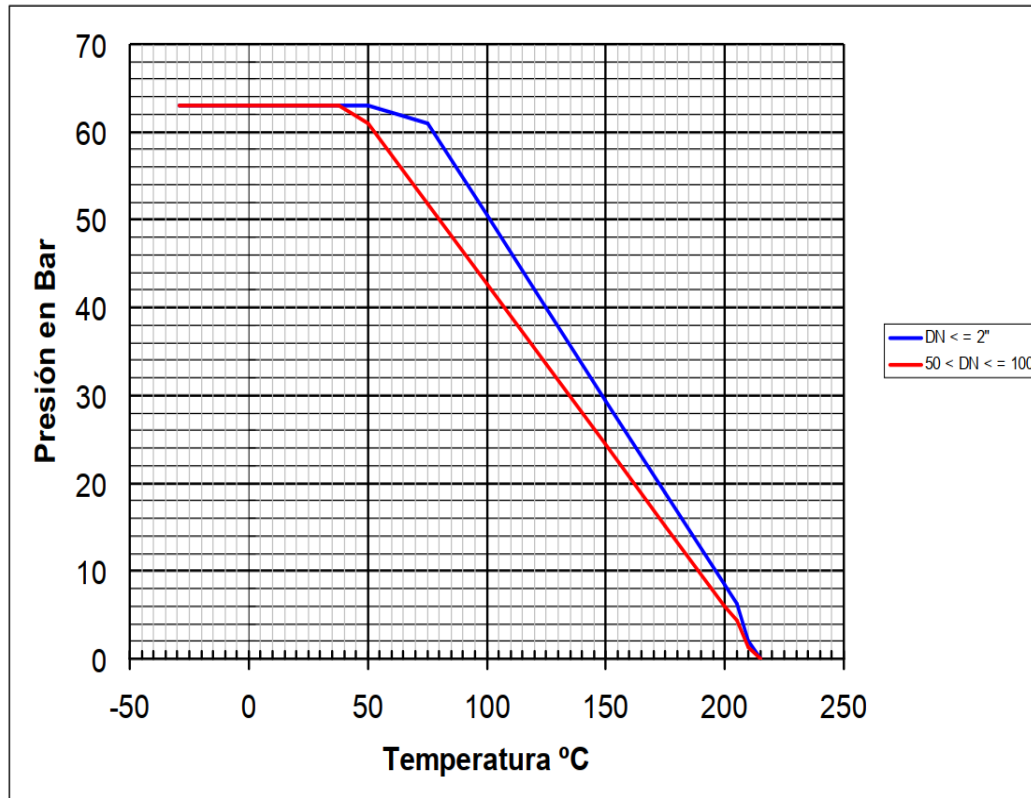


DIMENSIONS

Size	$D \pm 0.5$	$L \pm 2$	$H \pm 1$	D	E	A	ISO5211	W	H1	Net weight kgs
1/4"	11.6	55	38.5	9	9	12	F04/03	143	70	
3/8"	12.5	60	38.5	9	9	12	F04/03	143	70	0.45
1/2"	15	75	38.5	9	9	12	F04/03	143	70	0.58
3/4"	20	80	47.5	9	9	12	F04/03	143	79	0.76
1"	25	90	59	11	11	14	F05/04	163	95	1.1
1"1/4	32	110	63.5	11	11	14	F05/04	163	100	1.64
1"1/2	38	120	79	14	15	18	F07/05	188	116	2.47
2"	50	140	86.5	14	15	18	F07/05	188	124	3.6
2"1/2	64	162	109.	17	17	22	F10/07	350	141	7.41
3"	76	184	117	17	17	22	F10/07	350	149	10.44
4"	94	228	136	22	22	28	F12/10	350	173	21.5



PRESSURE TEMPERATURE RATING



ITEM	DESIGNATION	QTY	MATERIAL
1	BODY	1	CF8/CF8M
2	CAP	2	CF8/CF8M
3	BALL	1	CF8/CF8M
4	BALL SEAT	2	RPTFE
5	STEM	1	304/316
6	THRUST WASHER	1	PTFE
7	SPRING WASHER	4	304
8	BOLT NUT	4	304
9	STEM PACKING	3	PTFE
10	RING	1	304
11	BELLEVILLE WASHER	2	301
12	LOCK WASHER	1	304
13	STOP PIN	1	304
14	HANDLE NUT	2	304
15	HANDLE	1	304
16	HANDLE SLEEVE	1	PVC
17	WASHER	1	CF8/CF8M
18	O-RING	1	VITON
19	BOLT	4	304

HEADLOSS CHART

Kv VALUES

Kv = Flow rate of water in cubic meter per hour (m³/h) that will generate a pressure drop of 1 bar across the valve

1/4"	3/8"	1/2"	3/4"	1"	1 ¼"	1 ½"	2"	2 ½"	3"	4"
6	10	24	43	83	130	205	340	520	1100	1820